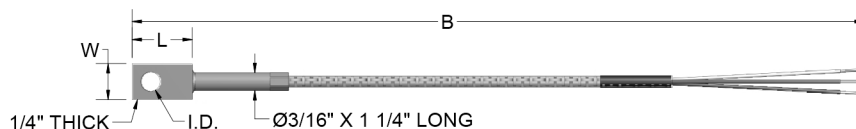


The ring type assembly pictured below has the RTD element embedded into a brass ring. Various ring sizes are available to measure the surface temperature of nozzles, extruder barrels, die heads, molds, and many other applicable surfaces. This assembly is supplied standard using a 100  $\Omega$  platinum element with a temperature coefficient of 0.003 85  $^{\circ}\text{C}^{-1}$  (IEC Class B). Elements of other materials, values, and tolerances are available upon request.



## ORDER CODES

**Example Order Number:**

1 1-2 2 3  
**RBF1853RB 2 - F3B012 - 2**

### 1-1 RTD Element Type

CODE		ELEMENT CONNECTION
SINGLE	DUPLEX <sup>[1]</sup>	
RBF1853RB	RBF2853RB	3-wire
RBF1852RB	RBF2852RB	2-wire

[1] Duplex assemblies available with polyimide or fluoropolymer wire only.

### 1-2 Ring Size

CODE	I.D. (inches)	W (inches)	L (inches)	SCREW SIZE
1	0.20	3/8	5/8	#6 - #10 4mm - 5mm
2	0.33	5/8	7/8	#12, 1/4" - 5/16" 5mm - 8mm
3	0.44	5/8	7/8	5/16" - 3/8" 8mm - 10mm

### 2 Extension Leadwire Type and "B" + "C" Dimension

CODE <sup>[1]</sup>	WIRE DESCRIPTION
F3_ _ _	Fiberglass insulation - stranded conductor
F3A_ _ _	Fiberglass insulation - stranded conductor - flexible armor
F3B_ _ _	Fiberglass insulation - stranded conductor - stainless steel overbraid
T3_ _ _	Fluoropolymer insulation - stranded conductor
T3A_ _ _	Fluoropolymer insulation - stranded conductor - flexible armor
K3_ _ _	Polyimide insulation - stranded conductor
K3A_ _ _	Polyimide insulation - stranded conductor - flexible armor
K3B_ _ _	Polyimide insulation - stranded conductor - stainless steel overbraid

[1] Insert 3 digit "B" length in inches. EX: F1A012=12" "B" length; for assemblies requiring other than the standard 6" "C" dimension, insert 3 digit "C" length in inches after "B" dimension. EX: F1A036-012=36" "B" length with additional 12" "C" length.

### 3 Terminations and Options

CODE	DESCRIPTION
0	Leads not stripped
2	2" split leads, 1/4" stripped
3	2" split leads with spade lugs
4	Standard plug
5	Standard jack
6	Miniature plug
7	Miniature jack
8	2" split leads with 1/4" female disconnects
<b>Options</b>	
MC	Mating connector
CC	Cable clamp
BX	Box connector